



The Sentry-go Health Indicator

Last Updated Thursday, 19 April 2012

© 3Ds (UK) Limited
<http://www.Sentry-go.com>

Be Proactive, Not Reactive!

Introduction

The System Health Indicator is integrated into the Sentry-go Monitoring System and is displayed at the top of most dynamic web reports it generates. It is designed to show the overall performance of all checks being performed and based on these, whether the overall “health” of the server being monitored is stable, deteriorating or improving.

It provides “at a glance” confirmation on the status of all checks being performed and whether not this performance is improving or worsening.


WALTON-64 - Sentry-go Monitoring Service - v5.6 - Reporting Menu - Windows Internet Explorer

http://127.0.0.1:1000/


File Edit View Favorites Tools Help

WALTON-64 - Sentry-go Monitoring Service - v5.6 - R...

Home RSS Print Page Tools

 **Sentry-go Monitoring System**
v6 Web Reporting

© 3Ds (UK) Limited
<http://www.Sentry-go.com>

Server : WALTON-64
Licence : 3Ds (UK) Limited
Generated on : 20th May 2011 at 20:33:13
System Health :  29% check success [?]

Sentry-go® v5.6 - Reporting Menu

Enterprise Option Reports

- [Current Enterprise Summary](#) The current status of all monitors within the Enterprise
- [Current Enterprise Status](#) The current or last known status of monitored items from all Enterprise servers
- [Recent Enterprise Alerts](#) Errors recently detected by all monitors within the Enterprise
- [Enterprise Configuration Errors](#) Configuration errors detected by all monitors within the Enterprise
- [Enterprise Configuration Settings](#) View/edit Enterprise configuration settings
- [Current Enterprise Statistics](#) Statistics from the Enterprise database & all Enterprise monitors

Standard Monitor Reports

- [Current Monitoring Status](#) The current or last known status of all monitored items

Done Trusted sites | Protected Mode: Off 100%

In essence, the higher the score, the less failures occurred during the last scan of each check - either those that required a response or those that cause an alert to be triggered are occurring.

The Server's Health Score

The Health Indicator is made up of two parts, a percentage figure and a trend.

- **The percentage shown** is the actual score based on the most recent scan of each check. If the last iteration of all checks was successful, then this value will be 100%.

To the left of the figure an arrow shows graphically how well the server is performing.



- **The trend indicator** – an up or down arrow to the right of the value is used to show the current trend – i.e. how the current score compares with the last score. It will show
 - **Trend improving ▲**

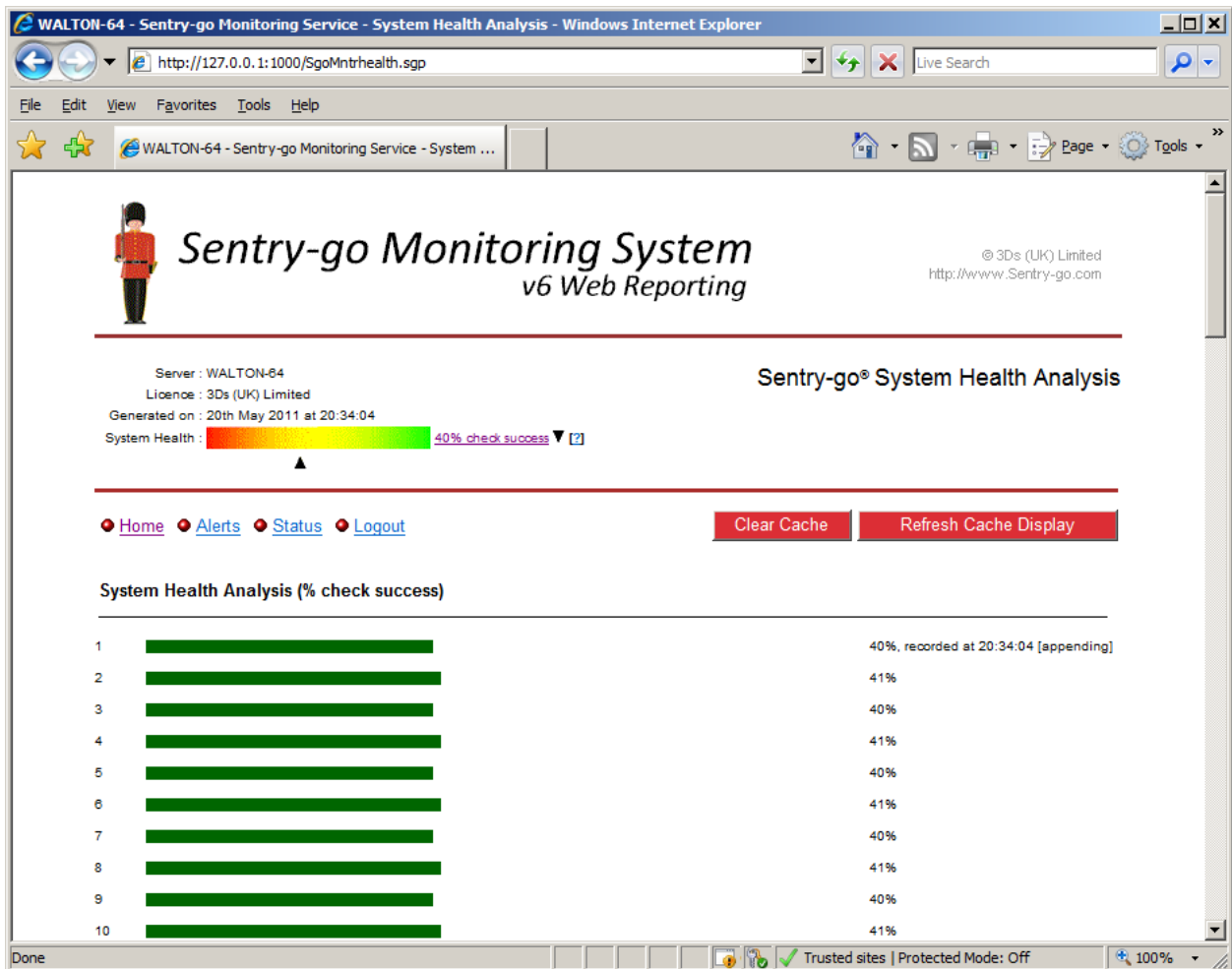
The last scan improved over the previous value - e.g. fewer checks are failing.
 - **Trend deteriorating ▼**

The overall score is less than the previous value - i.e. more checks are failing.
 - **Trend stable**

The current score was the same as the previous one. In this case no trend arrow is displayed

The Cache

Each active monitoring component maintains information relating to the last set of checks it performed. The Sentry-go monitor captures this information and maintains a cache of up to 100 recent scores, allowing you to see the current trend of checks on an overall basis. To view this cache, or clear the values recorded, click the indicator or the link next to it. The following report will then be shown ...



From here you can see the latest 100 cached values and, if required, clear the cache – e.g. if problems causing alerts to be triggered have been resolved.



When the monitor is started it is in “caching” mode. In this mode, the score is calculated & recorded each time a check is performed.

After the cache is full, the monitor swaps to “appending” mode. In this mode, the score is still calculated but only recorded if it is different from the current score. If it is different, the value is saved and the oldest cached score removed. Thus the “trend” in overall health can be tracked.

The time of the last calculation is shown on the report.

Factors the affect the Health Score

The value shown is an indication of performance only. It should be used as a guide as to how well your server is responding to the activities being asked of it.

More Information, Help & Support

More information can be found in the guides that accompany the Sentry-go software. You can also access the following resources ...

- For the very latest information & product updates, please visit <http://www.Sentry-go.com>
- For sales advice, please e-mail Sales@Sentry-go.com
- For technical support, please e-mail Support@Sentry-go.com

