



The Sentry-go Monitoring System

Running the Performance Monitor Wizard

Last Updated Thursday, 19 April 2012

© 3Ds (UK) Limited
<http://www.Sentry-go.com>



Be Proactive, Not Reactive!

Table of Contents

Symbols	2
Background.....	2
Running the Wizard	3
Selecting the Type of Performance Monitoring	4
Results.....	5
Next Steps	5
More Information, Help & Support	6

Symbols

Thank you for choosing Sentry-go® as your monitoring solution for Windows. In this guide, the following symbols are used to denote specific items ...

-  Important information which should be noted – it may affect what you are trying to do.
-  Additional information relating to the operation being described is shown.

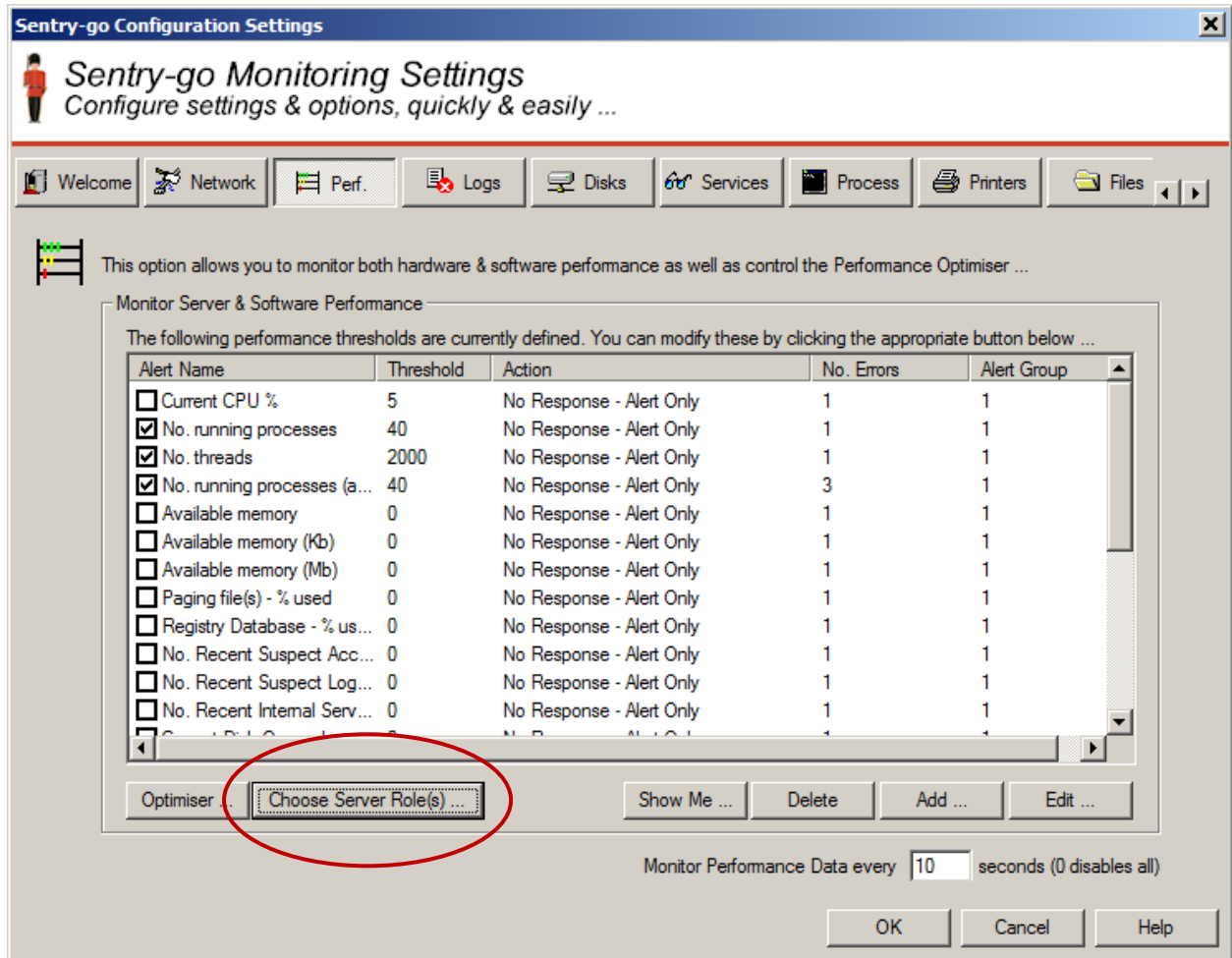
Background

This guide gives full details of how you can use the Performance Monitor Wizard to quickly & easily configure settings for Sentry-go performance monitoring on your local or remote server.

Running the Wizard

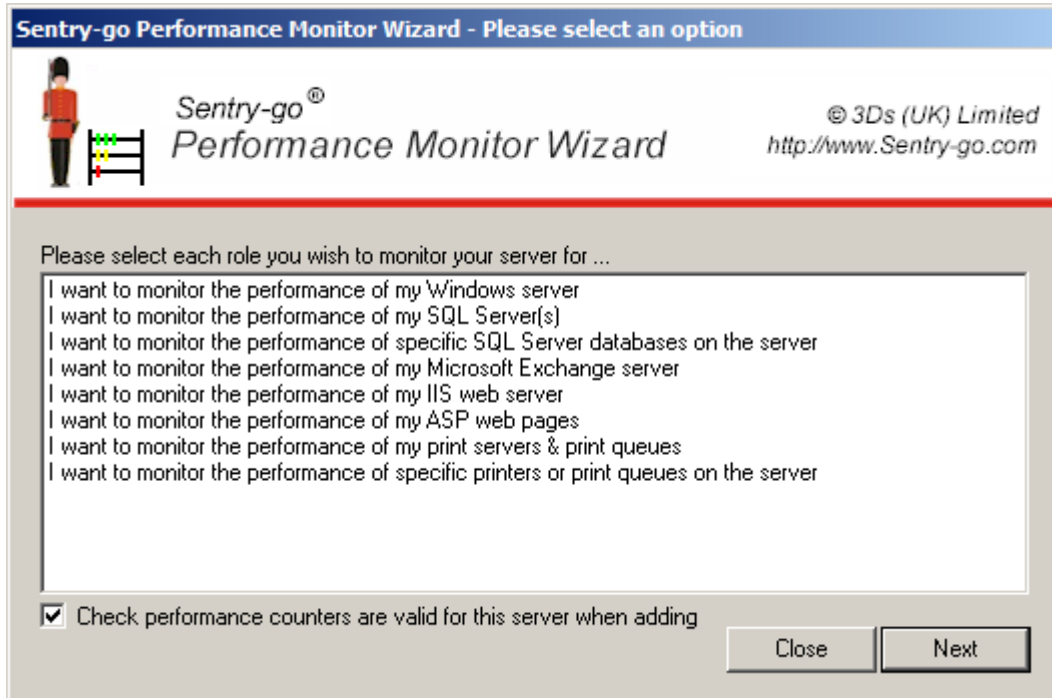
You can access the Wizard either when prompted by Setup, or from the Performance monitoring configuration tab.

- ⚠ The Wizard will save details to the monitor's configuration file directly. Any unsaved work will be lost when you run the Wizard. Always save any configured updates before running the Wizard.



Selecting the Type of Performance Monitoring

The Wizard's first screen allows you to select the type of monitoring you wish to configure.



You can choose to monitor typical performance information for a specific type of server or technology (SQL Server, Microsoft Exchange, IIS, ASP etc.) or configure individual items such as printers or SQL server databases.

Selection

Simply select the type of monitoring you wish to configure by selecting the appropriate value from the list.

Check Monitoring is Valid for server when adding

Tick this option to allow the Wizard to verify the options selected against the server being configured. Any options that appear not to be available will be added, but disabled by the Wizard.



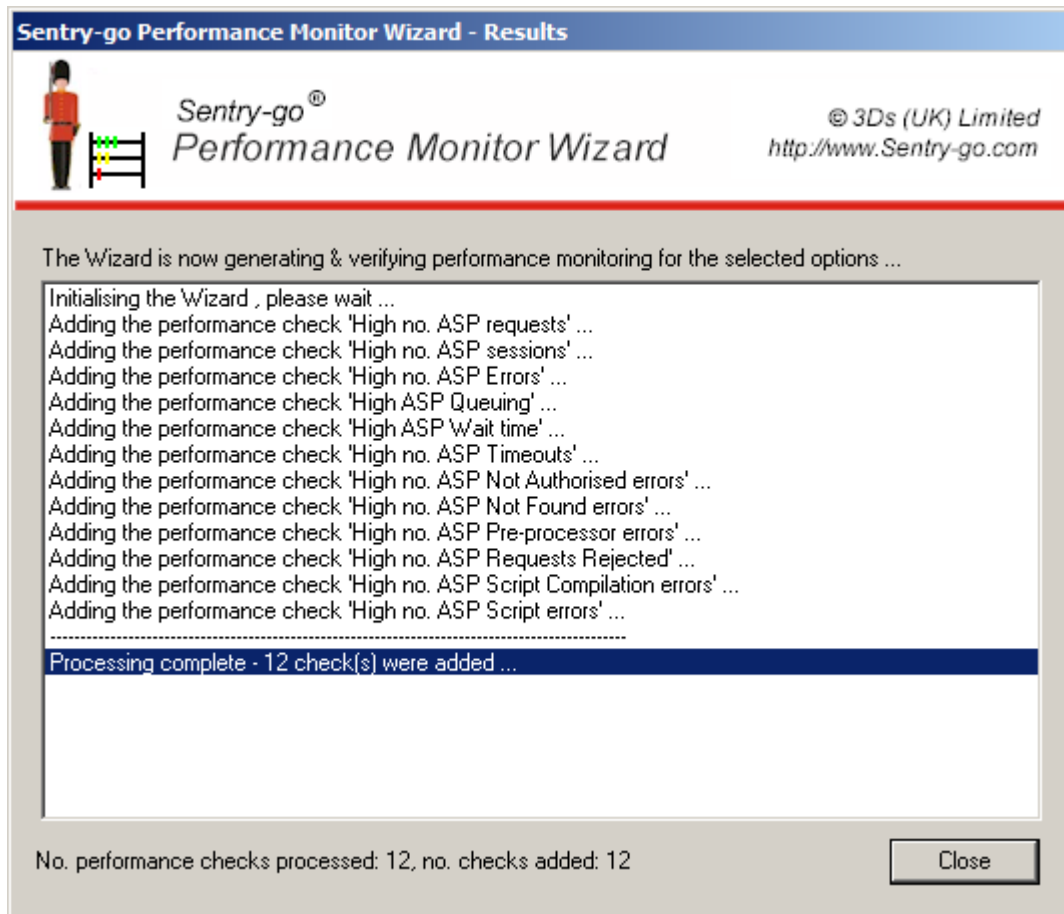
To avoid unavailable entries being made, it is recommended that you tick this option.

Click Next to continue.

Results

The Wizard will now check & configure the appropriate counters, updating its current status as the process continues.

Once complete, a message will indicate how many checks were added. If the check already exists within the server's configuration, it will be ignored by the Wizard.



Click Close to close the Wizard and return to the Configuration window.

Next Steps

The Wizard will automatically generate the appropriate checks as outlined above. It will also ...

- Set default values for thresholds (in some cases)
- Set default values for alerts
- Enable/disable checks as appropriate

Once complete, it is recommended that you review the new checks within the Client Console and further refine alerts, actions and thresholds as appropriate.

More Information, Help & Support

More information can be found in the guides that accompany the Sentry-go software. You can also access the following resources ...

- For the very latest information & product updates, please visit <http://www.Sentry-go.com>
- For sales advice, please e-mail Sales@Sentry-go.com
- For technical support, please e-mail Support@Sentry-go.com



3Ds (UK) Limited
Design, Develop, Deliver Solutions!

69, Esher Road,
East Molesey,
Surrey.
KT8 0AQ

<http://www.3Ds.co.uk>