



# The Sentry-go Monitoring System

## Monitoring Available Disk Space

Last Updated Thursday, 19 April 2012

© 3Ds (UK) Limited  
<http://www.Sentry-go.com>

*Be Proactive, Not Reactive!*

---

## Table of Contents

Symbols .....	2
Background.....	2
Recommended Monitoring Settings .....	2
Quick Facts.....	3
Monitoring Available Disk Space .....	3
Configuring Disk Monitoring.....	5
Scheduling the Check.....	6
Temporarily Ignoring a Configured Check.....	7
Configuring an Automatic Response .....	7
More Information, Help & Support .....	8



---

## Symbols

Thank you for choosing Sentry-go® as your monitoring solution for Windows. In this guide, the following symbols are used to denote specific items ...



Important information which should be noted – it may affect what you are trying to do.



Additional information relating to the operation being described is shown.

---

## Background

As with all computer systems, your servers, desktops & applications require disk space to function correctly. This is required not only to save your own data, but also applications, their data (such as databases, mailboxes, spool files) and for Windows itself to operate. For example, in low memory conditions where data and logic is temporarily written (or “swapped out”) to one or more paging files on disk.

Ensuring that sufficient disk space is available on your server at all times is therefore important for the smooth running of critical systems. Sentry-go allows you to do this with ease & this guide gives full details of how you can achieve this.

---

## Recommended Monitoring Settings

It is recommended that local hard disks - especially system volumes and disks that store temporary files are checked, every 3 hours for 20% free space.

---

## Quick Facts

Here is a summary of the options available with this component. They are discussed in more detail in the pages that follow ...

Component :	Available Disk Space Monitor
Aim/Description :	To provide periodic monitoring of local hard drives, ensuring sufficient free disk space is available to support the environment.
Main Monitoring Features :	<ul style="list-style-type: none"><li>• Available free space in megabytes</li><li>• Available free space as a % of total disk capacity</li></ul>
Periodic Monitoring :	✓
Scheduled Monitoring :	✓
Local Monitoring :	✓
Dial-up Support :	
Alerting :	All alerting & auto-response options available
Web Reports :	Status report
External software req's :	None

---

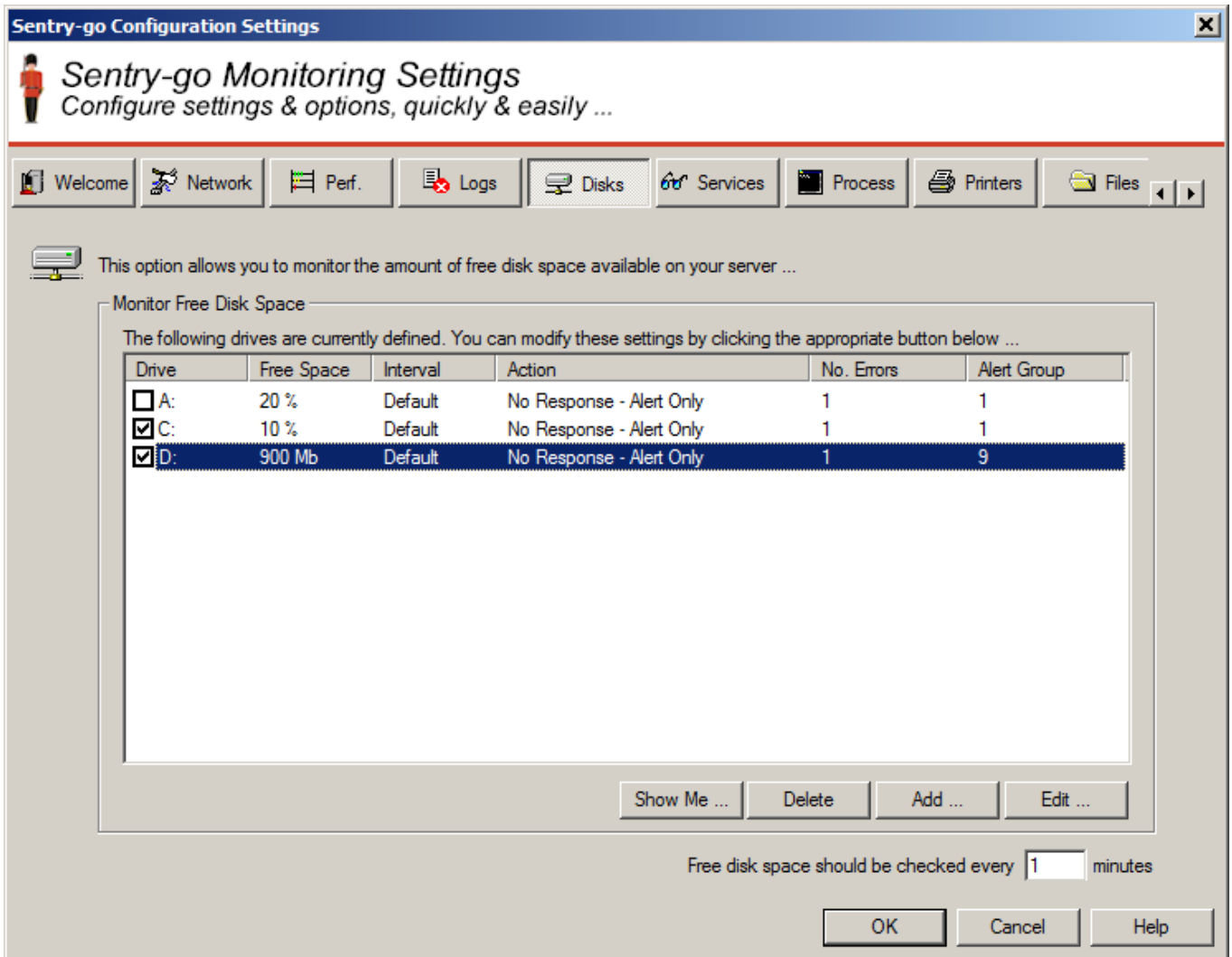
## Monitoring Available Disk Space

To monitor network availability simply select the Sentry-go monitor from the Client Console with the right mouse button and click "Configure".

A window containing a number of tabs will be displayed. To monitor available disk space, select the "Disks" tab. From here, you can configure the following ...

- The monitoring of one or more fixed disks on the system.
- What should happen in the event a low disk space condition is encountered.
- How often disk should be checked.
- Temporarily disable the monitoring of one, more or all disks.

The resulting list will show the fixed disks found on the local server, which ones are being monitored and the response the Sentry-go should take if the specified space is not available. From here you can monitor new disks or edit the settings for those already defined.



### Free disk space should be checked every (minutes)

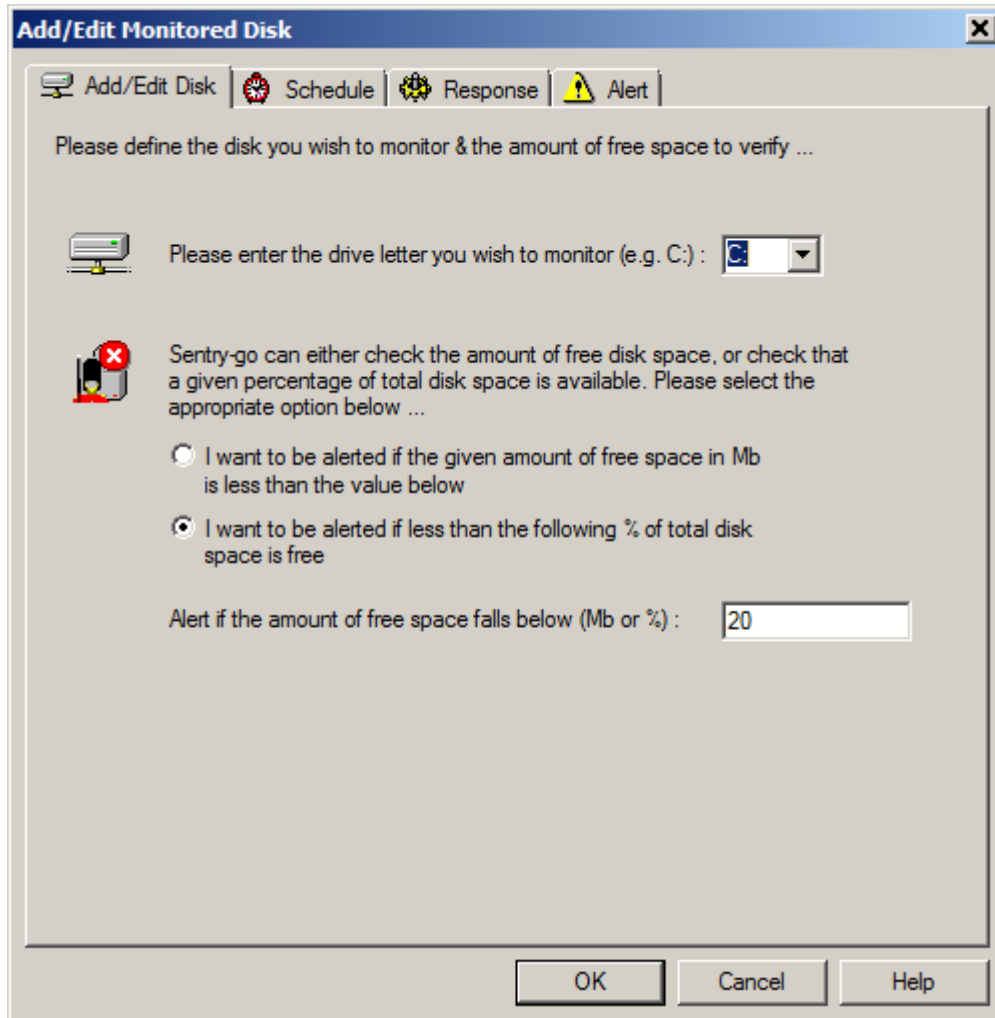
This value specifies how often, in minutes, Sentry-go should check for available space on the disks listed. For system drives and drives used by the print spooler, it is recommended that a more frequent check be performed - e.g. 5 - 15 minutes. To disable all the above checks (not recommended), set this value to 0.

This interval is only used when the interval is set to "Default". You can also configure the monitor to check a particular drive at a given time or interval - e.g. hourly, daily etc. To do this, edit the particular disk from the list or configure the interval when the disk is added to the list.

---

## Configuring Disk Monitoring

To monitor a new disk or edit an existing one, select the Add or Edit option from the main window.



From here you can define which drive is to be monitored and the amount of free space you wish to verify.

### **Please enter the drive letter you wish to monitor**

Enter or select the local fixed disk you want the monitor to verify. For example, C: or D: etc.

### **I want to be alerted if the given amount of free space in Mb is less than the value below**

Select this option if you wish to check for a fixed amount of free space. In this case, the value entered below indicates the amount of available disk space - in Mb, that you wish to ensure is available.

## I want to be alerted if less than the following % of total disk space is free

Select this option if you wish to check if a given % of the total size of the disk fixed is free. In this case, the value entered below indicates the percentage of free space to check for.

## I want to be alerted if the amount of free space falls below (Mb or %)

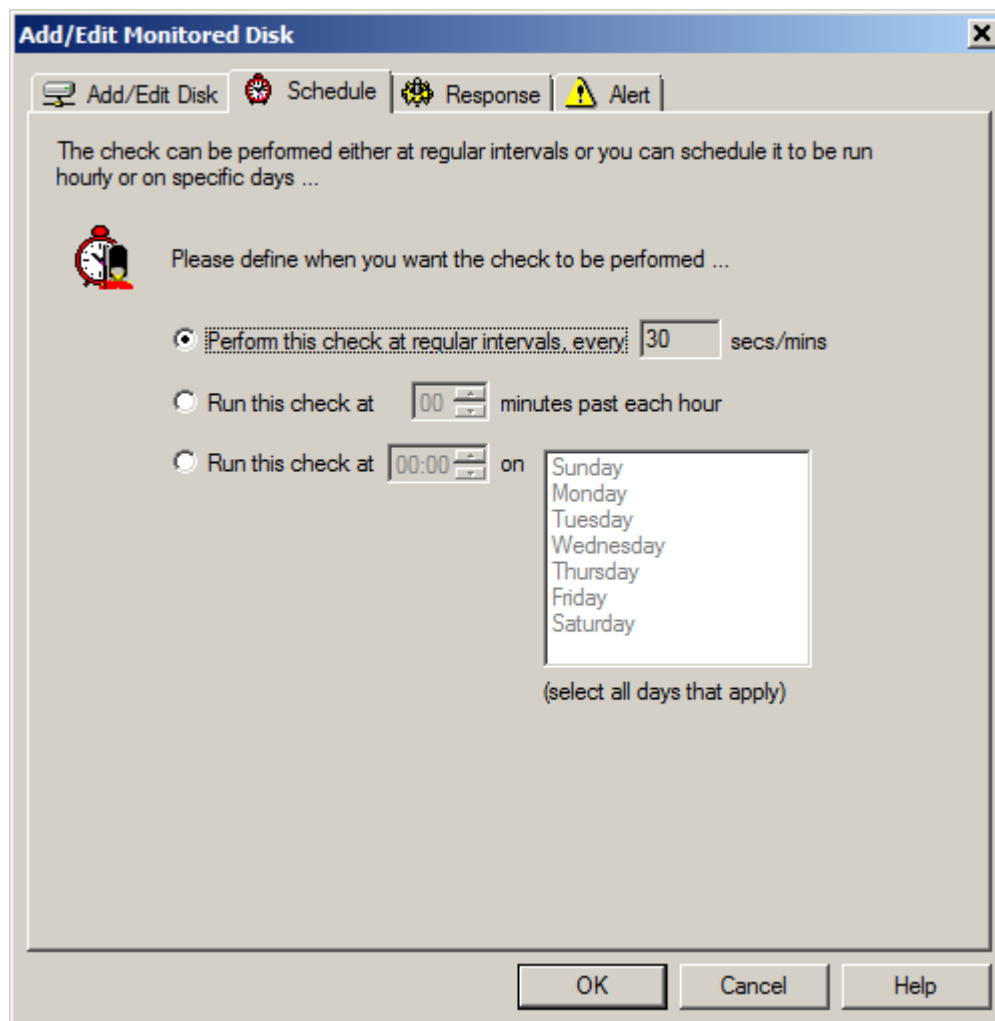
Depending on the option above, this value specifies either the amount of free disk space (in Mb) or the percentage of free space that you wish to check for. If available space falls below this amount, an alert will be triggered.

---

## Scheduling the Check

By default, each check is performed periodically at regular intervals throughout the day. The frequency of these checks is determined by the value specified at the bottom of the main list.

However, there may be times when you wish to perform the check at a different time, maybe at a set time each day, or on certain days etc. To do this, select the "Schedule" tab.



From here you can define exactly when the check is to be performed.

### **Perform this check at regular intervals, every (mins)**

Select this option to use the default interval specified at the bottom of the on the main list window. In this case the check will be performed every X minutes.

### **Run this check at HH:MM and every hour thereafter**

Select this option to run the check at the specified time past each hour. In this case, only the minutes (MM) are used to determine when the check is to be performed.

### **Run this check at HH:MM On [Days]**

Select this option to run the check at the specified time on the given days. In this case, the check will be performed at the given time if the associated day has been selected. Select all days that apply.

---

## Temporarily Ignoring a Configured Check

In some cases, you may wish to exclude a check from monitoring without removing it permanently. To do this, simply remove the “tick” or check against the entry you wish to ignore in the main list.

---

## Configuring an Automatic Response

In the event an error is detected, an alert will be triggered. In this case, Sentry-go can be configured to either respond automatically (i.e. take action itself, for example to delete temporary files to reclaim disk space), alert one or more Administrators, or both.

To configure what the monitor should do in the event an error is detected, select the entry from the list and click Edit. On the resulting window, select the Response tab.



For more information on the options available as well as details on how to configure alerts & responses, see [Sentry-go - Configuring Alert & Automatic Response Options](#).

---

## More Information, Help & Support

More information can be found in the guides that accompany the Sentry-go software. You can also access the following resources ...

- For the very latest information & product updates, please visit <http://www.Sentry-go.com>
- For sales advice, please e-mail [Sales@Sentry-go.com](mailto:Sales@Sentry-go.com)
- For technical support, please e-mail [Support@Sentry-go.com](mailto:Support@Sentry-go.com)



**3Ds (UK) Limited**  
*Design, Develop, Deliver Solutions!*

69, Esher Road,  
East Molesey,  
Surrey.  
KT8 0AQ

<http://www.3Ds.co.uk>