



How to Monitor Windows Services with Sentry-go

Last Updated Thursday, 19 April 2012

© 3Ds (UK) Limited
<http://www.Sentry-go.com>

Be Proactive, Not Reactive!

Monitoring the Windows services running on a server is quick & simple with Sentry-go. Once configured, the monitor will periodically verify the status of services, respond to failures and/or alert you when issues are detected.

To do this, follow these steps ...

- Start the Easy Access Utility or Client Console, select the monitor & click “Configure”.
[Click here for more information on configuring Sentry-go.](#)
- Select the “Services” button to display the Services configuration list.

Sentry-go Configuration Settings

Sentry-go Monitoring Settings
Configure settings & options, quickly & easily ...

Welcome | Network | Perf. | Logs | Disks | **Services** | Process | Printers | Files

Sentry-go is currently monitoring the following Windows services ...

Monitor Auto-start Services

How do you want to monitor auto-start services ?
Automatically restart local auto-services if not running

Notify this alert group ...
Critical Errors

Monitor or Ignore Specific Windows Services

Please select other services you wish to monitor below. To monitor a custom service, add it to the list and tick it. To prevent a service (either custom or "auto-start") from being monitored, add it to the list and ensure it is un-ticked ...

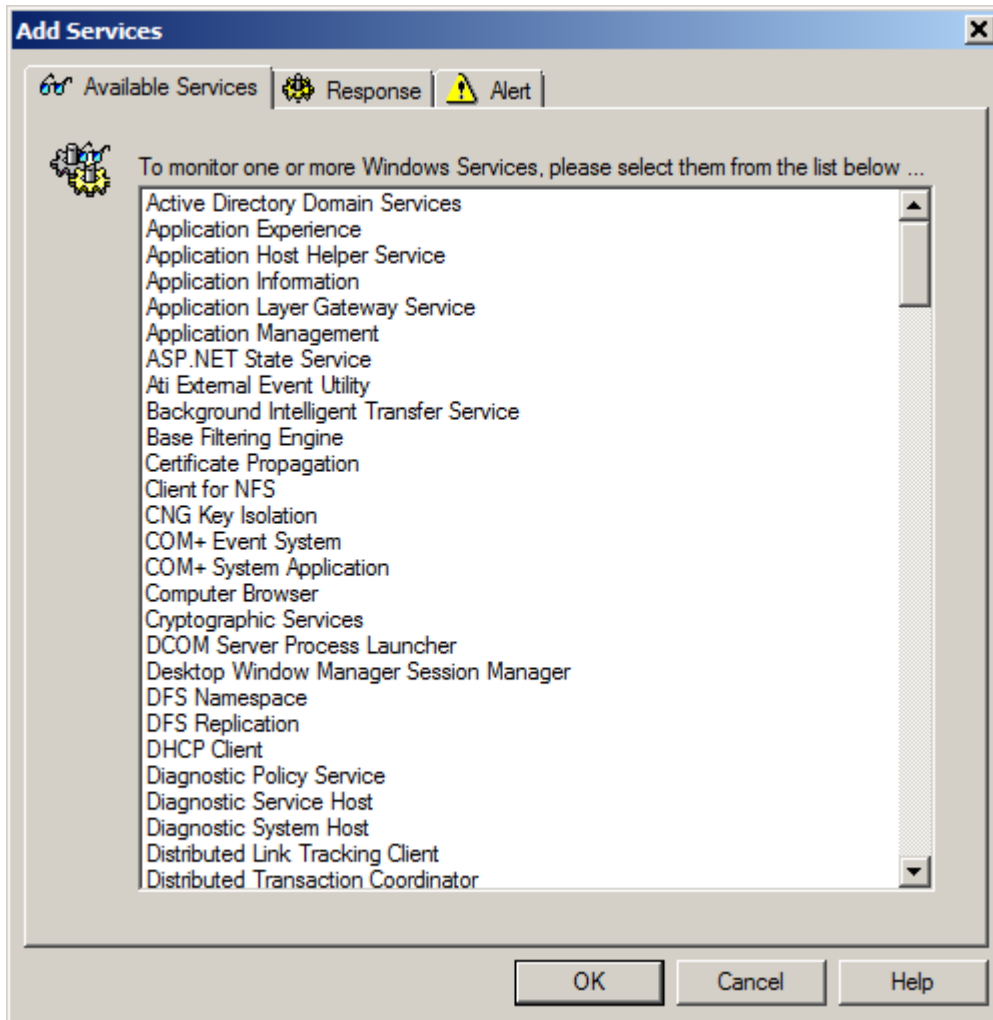
Services	Action	Alert Group
<input type="checkbox"/> Application Experience	No Response - Alert Only	1
<input type="checkbox"/> Application Host Helper Service	No Response - Alert Only	1
<input type="checkbox"/> Application Information	No Response - Alert Only	1
<input type="checkbox"/> Application Layer Gateway Service	No Response - Alert Only	1
<input type="checkbox"/> Application Management	No Response - Alert Only	1
<input checked="" type="checkbox"/> ASP.NET State Service	No Response - Alert Only	1
<input type="checkbox"/> Ati External Event Utility	No Response - Alert Only	1
<input checked="" type="checkbox"/> World Wide Web Publishing Service	No Response - Alert Only	1

Show Me ... | Delete | Add ... | Edit ...

Check service status every minutes (0 disables all)

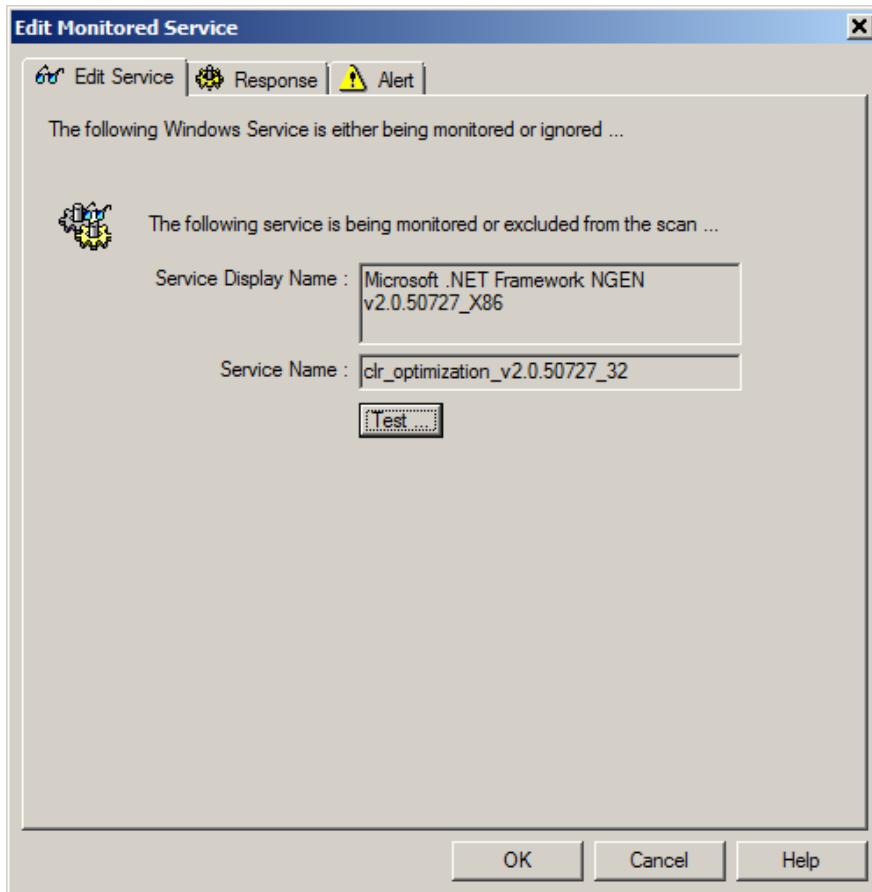
OK | Cancel | Help

- To monitor the status of all services automatically started by Windows during the boot sequence (recommended) ...
 - Select the appropriate option from the “How do you want to monitor auto-start services” dropdown list.
 - Select the group that will be notified if one or more of these services are found not to be running etc.
 - Optionally add any services that you wish to exclude from this scan (see below).
- To monitor the status of a specific service, ignore a specific service, or configure an auto-response for a specific services ...
 - Click “Add” in the lower list to display the “Add Services” window.



- Select/highlight the service(s) you wish to include in the override list & click OK.
- The selected services will be added to the main list.
- To include a service from any auto-scan, tick its entry in the list.
- To exclude a service from any auto-scan, un-tick its entry in the list.

- To automatically perform a specific action when the service fails, tick the service in the main list, then click “Edit”.



- Click “Response” to define any automatic action you wish Sentry-go to take in the event the check fails. These settings include ...
 - How many errors should occur in succession before action is taken.
 - The auto-response the monitor should take, if any, if the check fails.
 - Automatically restarting or resuming services etc.
 - [Click here for more information on defining automatic responses.](#)
- Click “Alert” to define the alert that should be triggered in the event the check fails. This includes ...
 - Which group should be notified of the failure.
 - How members of the group should be notified.
 - When notifications should be run etc.
 - [Click here for more information on defining alerts.](#)
- Click OK to add the new resource to the main list.

More Information

If you need more help or information on this topic ...

- See [Monitoring TCP/IP Ports & Windows Firewall.](#)
- Contact our [Support Team.](#)
- Watch [demonstrations & walkthrough videos on-line.](#)
- Visit <http://www.Sentry-go.com>.

