



How to Monitor Port Access & Windows Firewall with Sentry-go

Last Updated Thursday, 19 April 2012

© 3Ds (UK) Limited
<http://www.Sentry-go.com>

Be Proactive, Not Reactive!

Monitoring the availability of key network (TCP/IP) listen ports is quick & simple with Sentry-go. Once configured, the monitor can periodically verify that access to these ports is available, key services are listening for the proper inbound requests and alert you immediately issues are detected. The status of the Windows Firewall can also easily be monitored from here.

To do this, follow these steps ...

- Start the Easy Access Utility or Client Console, select the monitor & click "Configure".
[Click here for more information on configuring Sentry-go.](#)
- Select the "Ports" button to display the Ports configuration list.

Sentry-go Configuration Settings

Sentry-go Monitoring Settings
Configure settings & options, quickly & easily ...

Disks Services Process Printers Files Ports HTML FTP E-mail

Sentry-go is currently monitoring the availability of the following local TCP/IP ports & firewall status ...

Monitor Windows Firewall

How do you want to monitor the Windows Firewall ?
Monitor the Windows Firewall & automatically enable if disabled Test ...

Notify this alert group ...
Critical Errors Show Me ...

Monitor TCP/IP Ports & Windows Firewall

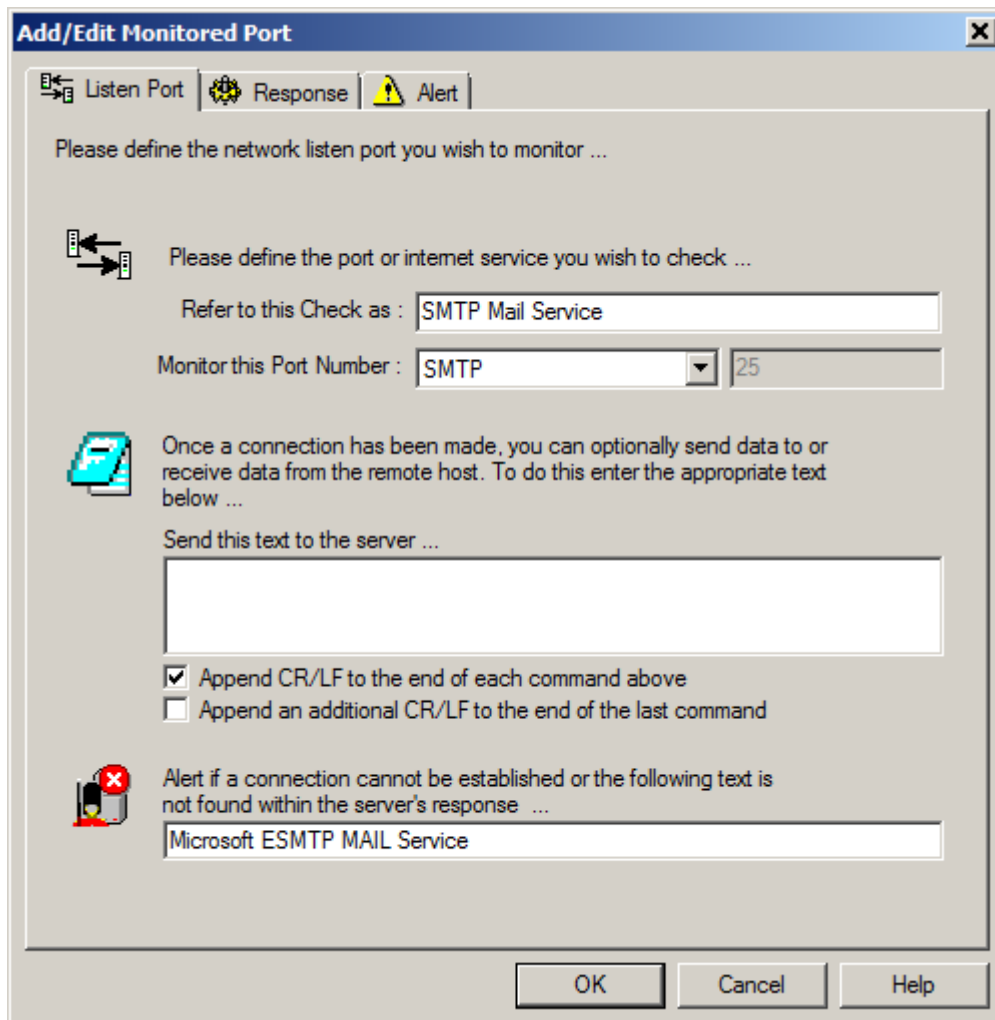
Port Name	Port No	Action	No. Errors	Alert Group
<input checked="" type="checkbox"/> Web (HTTP) Server	80	No Response - Alert Only	1	1
<input checked="" type="checkbox"/> Secure Web (HTTPS) S...	443	No Response - Alert Only	1	1
<input checked="" type="checkbox"/> FTP Server	21	No Response - Alert Only	1	1
<input checked="" type="checkbox"/> E-mail Send (SMTP) Ser...	25	No Response - Alert Only	1	1
<input checked="" type="checkbox"/> E-mail Receive (POP3) S...	110	No Response - Alert Only	1	1
<input checked="" type="checkbox"/> E-mail Receive (IMAP) S...	143	No Response - Alert Only	1	1
<input checked="" type="checkbox"/> Custom Port 1001	1001	No Response - Alert Only	1	1

Show Me ... Delete Add ... Edit ...

The Windows Firewall and/or Network listen ports should be checked every 5 minutes (0 disables all)

OK Cancel Help

- To monitor the status of the Windows Firewall ...
 - Select the appropriate option from the “How do you want to monitor the Windows Firewall” dropdown list.
 - Optionally click the “Test” button to verify that the Firewall is accessible from the monitor.
 - Select the group that will be notified if a Firewall status error is detected.
- To verify access to a TCP/IP port (either a standard or custom port) ...
 - Click “Add” to display the “Add/Edit Monitored Port” window.



- Enter the name of the check you are defining.
- Select the TCP/IP listen port you wish to monitor. This can be a “well known” or standard port from the list or “(Other)” to enter your own custom port number.
- Optionally enter any conversation data you wish to send and/or verify receipt of. For example, if you’re connecting to an SMTP server you may wish to verify that its initial response is as expected. [Click here for more information on specifying initial conversation data.](#)

- Click “Response” to define any automatic action you wish Sentry-go to take in the event the check fails. These settings include ...
 - How many errors should occur in succession before action is taken.
 - The auto-response the monitor should take, if any, if the check fails.
 - [Click here for more information on defining automatic responses.](#)
- Click “Alert” to define the alert that should be triggered in the event the check fails. This includes ...
 - Which group should be notified of the failure.
 - How members of the group should be notified.
 - When notifications should be run etc.
 - [Click here for more information on defining alerts.](#)

More Information

If you need more help or information on this topic ...

- See [Monitoring TCP/IP Ports & Windows Firewall.](#)
- Contact our [Support Team.](#)
- Watch [demonstrations & walkthrough videos on-line.](#)
- Visit <http://www.Sentry-go.com>.

