



How to Monitor Network Availability with Sentry-go

Last Updated Thursday, 19 April 2012

© 3Ds (UK) Limited
<http://www.Sentry-go.com>

Be Proactive, Not Reactive!

Monitoring access to TCP/IP devices such as servers & PCs across the network is quick & simple with Sentry-go. Once configured, the monitor will periodically verify access to defined resources and alert you when connectivity issues are detected.

To do this, follow these steps ...

- Start the Quick Monitor Configuration Utility or Client Console, select the monitor & click "Configure". [Click here for more information on configuring Sentry-go.](#)
- Select the "Network" button to display the primary Network Access configuration list. From here you can configure automatic & specific settings, depending on what you want to monitor.

Sentry-go Configuration Settings

Sentry-go Monitoring Settings
Configure settings & options, quickly & easily ...

Welcome | **Network** | Perf. | Logs | Disks | Services | Process | Printers | Files

Sentry-go is currently monitoring the availability of the following network resources ...

Default Options & Auto-Scan

- Automatically check Windows servers in the domain: Timeout each check after (secs) : 15
- Automatically check all Windows PCs in the domain: After error, don't check device again for (mins) : 5
- Notify this alert group : Critical Errors

Monitor or Ignore Specific Network or TCP/IP Resources

Please enter other TCP/IP or network resources you wish to monitor below. To monitor a device, add it to the list and tick it. To prevent a device (either custom or "auto") from being monitored, add it to the list and ensure it is un-ticked ...

Server/PC	Action	Alert Group
<input type="checkbox"/> IgnoreThisServer	No Response - Alert Only	1
<input checked="" type="checkbox"/> 132.224.23.5	No Response - Alert Only	1

Settings ... Show Me ... Delete Add ... Edit ...

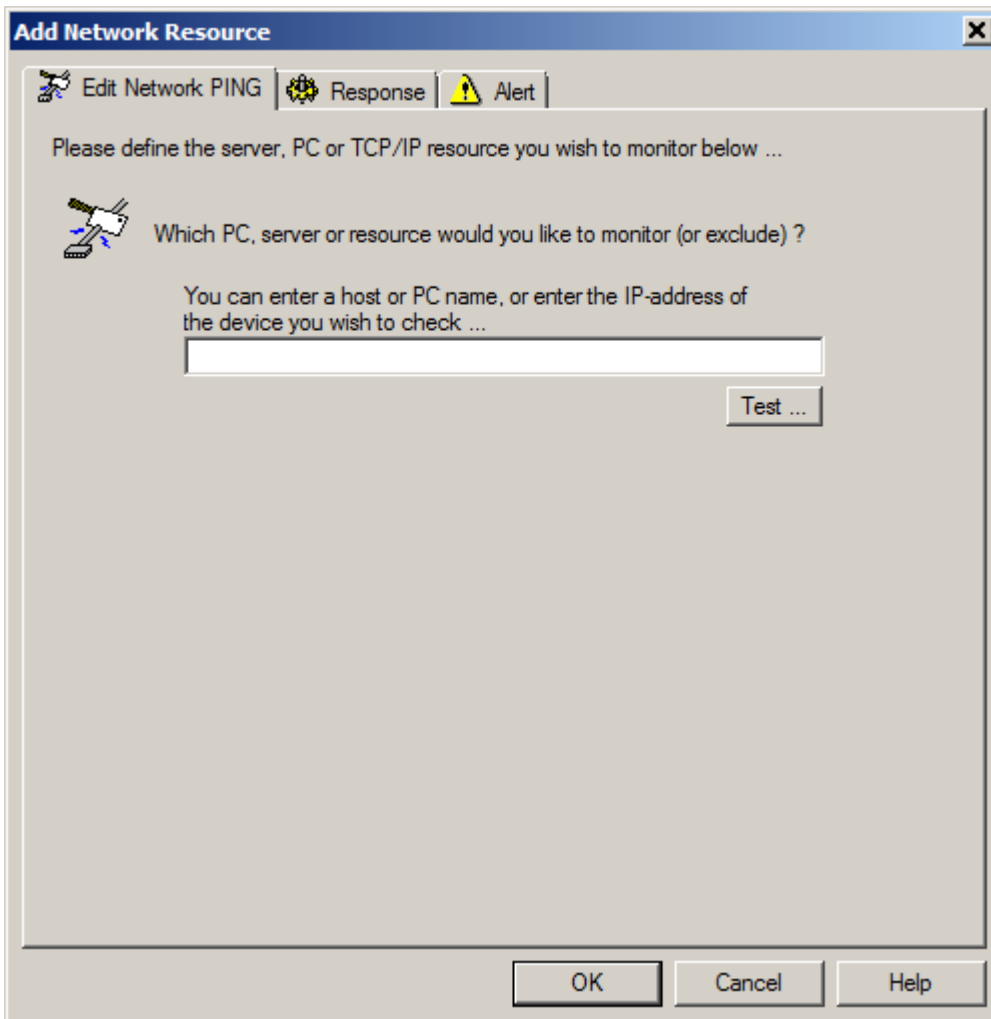
Check network availability every 30 seconds (0 disables all)

OK Cancel Help

- To monitor access from this server to all Windows servers in the domain ...
 - Select the “Automatically check Windows servers in the domain” tick box.
 - Set the timeout & other options
 - Select the group that will be notified if one or more servers are unavailable.
 - Optionally add any specific servers you wish to ignore (see below).
 - Optionally add any other specific devices you wish to monitor (see below).

- To monitor access from this server to all Windows PCs in the domain (e.g. in a public or customer facing domain) ...
 - Select the “Automatically check all Windows PCs in the domain” tick box.
 - Set the timeout & other options
 - Select the group that will be notified if one or more PCs are unavailable.
 - Optionally add any specific PCs you wish to ignore (see below).
 - Optionally add any other specific devices you wish to monitor (see below).

- To monitor access from this server to a specific server, PC or device, ignore a specific server, PC or device, or configure an auto-response for a specific server, PC or device ...
 - Click “Add” in the lower list to display the “Add Network Resource” window.



- Enter the name or IP address of the device you wish to define.
- Optionally click the “Test” button to verify access to the device from the monitor.

- Click “Response” to define any automatic action you wish Sentry-go to take in the event the check fails. These settings include ...
 - How many errors should occur in succession before action is taken.
 - The auto-response the monitor should take, if any, if the check fails.
 - [Click here for more information on defining automatic responses.](#)
- Click “Alert” to define the alert that should be triggered in the event the check fails. This includes ...
 - Which group should be notified of the failure.
 - How members of the group should be notified.
 - When notifications should be run etc.
 - [Click here for more information on defining alerts.](#)
- Click OK to add the new resource to the main list.
- To ensure the device is monitored, tick it's entry in the main list.
- To ignore the device (e.g. to ignore a device that would otherwise be monitored by the automatic options above), ensure its entry in the main list is un-ticked.

More Information

If you need more help or information on this topic ...

- See [Monitoring Network Availability.](#)
- Contact our [Support Team.](#)
- Watch [demonstrations & walkthrough videos on-line.](#)
- Visit <http://www.Sentry-go.com>.

