




Configuring the *Sentry-go Enterprise Option*

Last Updated Thursday, 19 April 2012

© 3Ds (UK) Limited
<http://www.Sentry-go.com>

Be Proactive, Not Reactive!


The Enterprise Option is a self-contained system which uses a central SQL Server database to collect & collate monitored information from around the Sentry-go environment. This information is then available to web reports which operate on an enterprise-wide basis, as opposed to standard reports which are based per server

-  The Enterprise Option is an optional add-on. Sentry-go monitors can work with, or without it as required.

Subscribing to the Enterprise Option

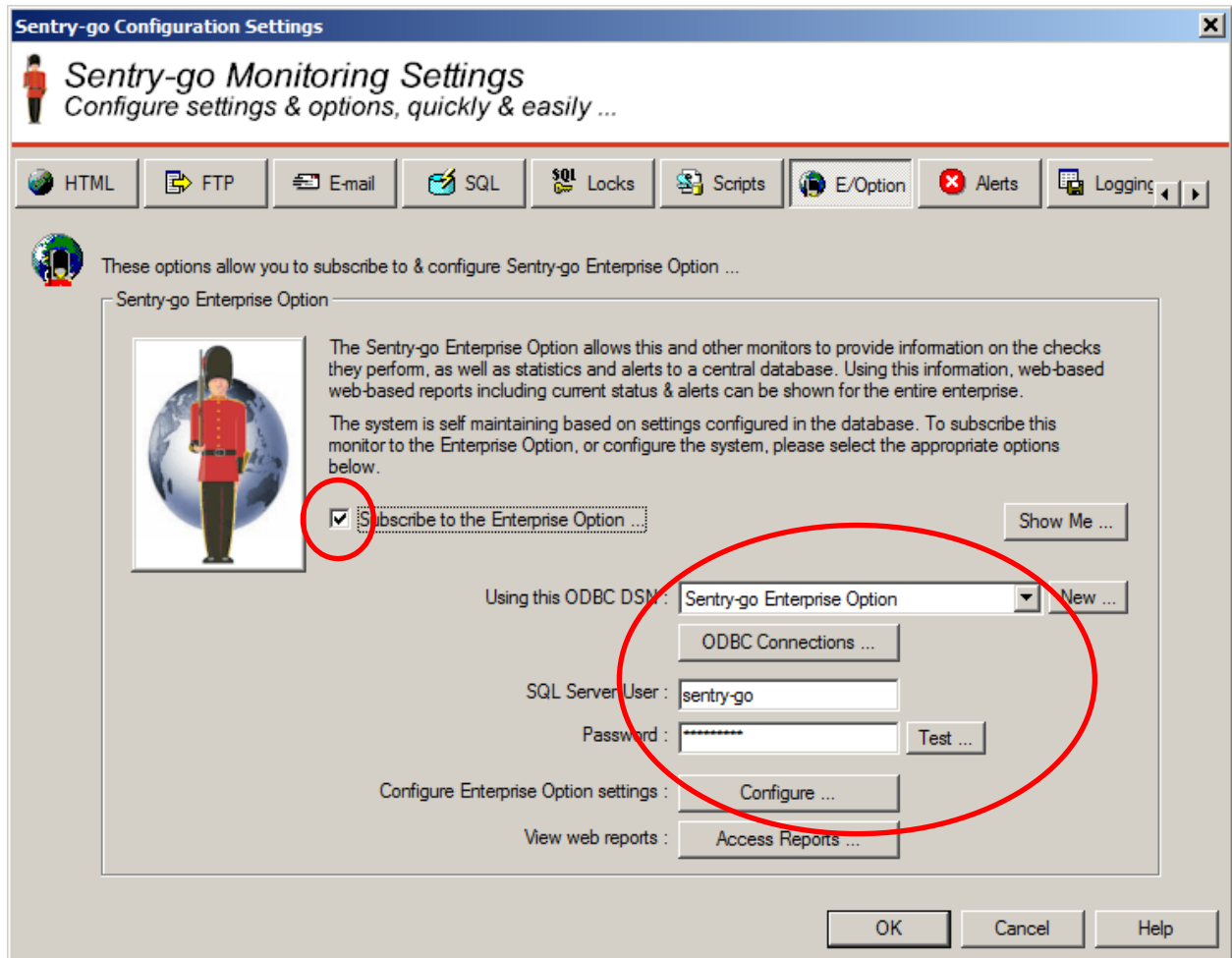
To operate, Sentry-go monitors “subscribe” to the Enterprise Option, meaning that they connect to the SQL Server database where the EO’s database is stored. Using this connection, the monitor will feed information directly to the database as required – e.g. status information, alerts & configuration details.

The subscription also allows the monitor to access the database in order to generate additional Enterprise level reports through its integrated web server.

-  Before a monitor can subscribe to the Enterprise Option, the EO database must be installed & configured on a SQL Server that is accessible to it. For information on doing this, please see the Sentry-go Installation guide.

To subscribe to the Enterprise Option, you can either create a connection during monitor Setup/upgrade (see the installation guide for details on this) or you can configure it through the Sentry-go Client Console. This option is described below.

From the Client Console or Quick Monitor Configuration Utility, configure the appropriate monitor and select the E/Option tab to display the following window ...



Subscribe to the Enterprise Option

Check (tick) this option if you want the monitor to ...

- Forward information to the Enterprise database
- Have access to Enterprise Option web reporting

Connect to the Enterprise Option database using this ODBC DSN

Select the ODBC data source that will be used to connect to the SQL Server database from the monitor. This data source, which may have been created using the Sentry-go Setup Wizard during installation or upgrade should have the following settings ...

- Connect to the SQL Server on which the Enterprise Option database is defined
- Have its default database set to the Enterprise Option database

 To create a new DSN, click the “...” button.

To view or configure an existing DSN, click the “ODBC Connections” button.

SQL Server User

If a SQL Server user is defined for this connection, enter it here. For trusted connections, leave this field blank.



If you are using a trusted connection, the monitoring service itself must run as a user with access to the SQL Server database in order to function.

See [“Using a Trusted SQL Server Connection with Sentry-go”](#) for more information.

Password

This is the password for the above user. For trusted connections, leave this field blank.

Testing Access

To test access using the above configuration settings, click the “Test” button. This will connect to the monitor being configured so that it can verify the settings entered.

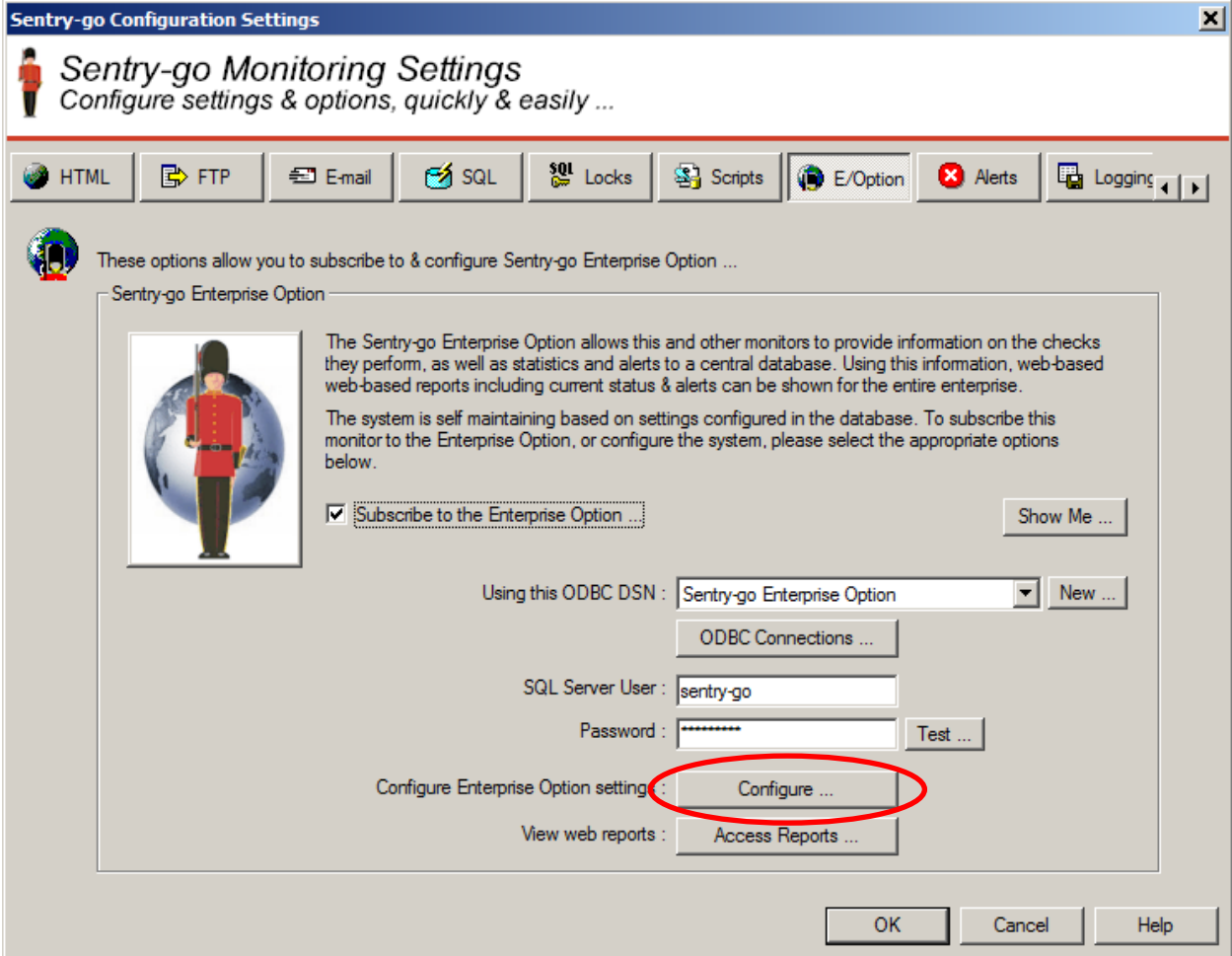
The test will verify ...

- The ODBC connection is available
- A connection can be made to the SQL Server
- The database defined is accessible
- The database defined is a valid Enterprise Option database

Configuring Enterprise Option Settings

The Sentry-go Enterprise Option is a global resource and as such stores its settings centrally within its own database. You can configure these settings, however, from the Client Console by configuring any monitor that subscribes to it.

To configure Enterprise Option settings, from the Client Console, configure the appropriate monitor and select the E/Option tab to display the following window ...



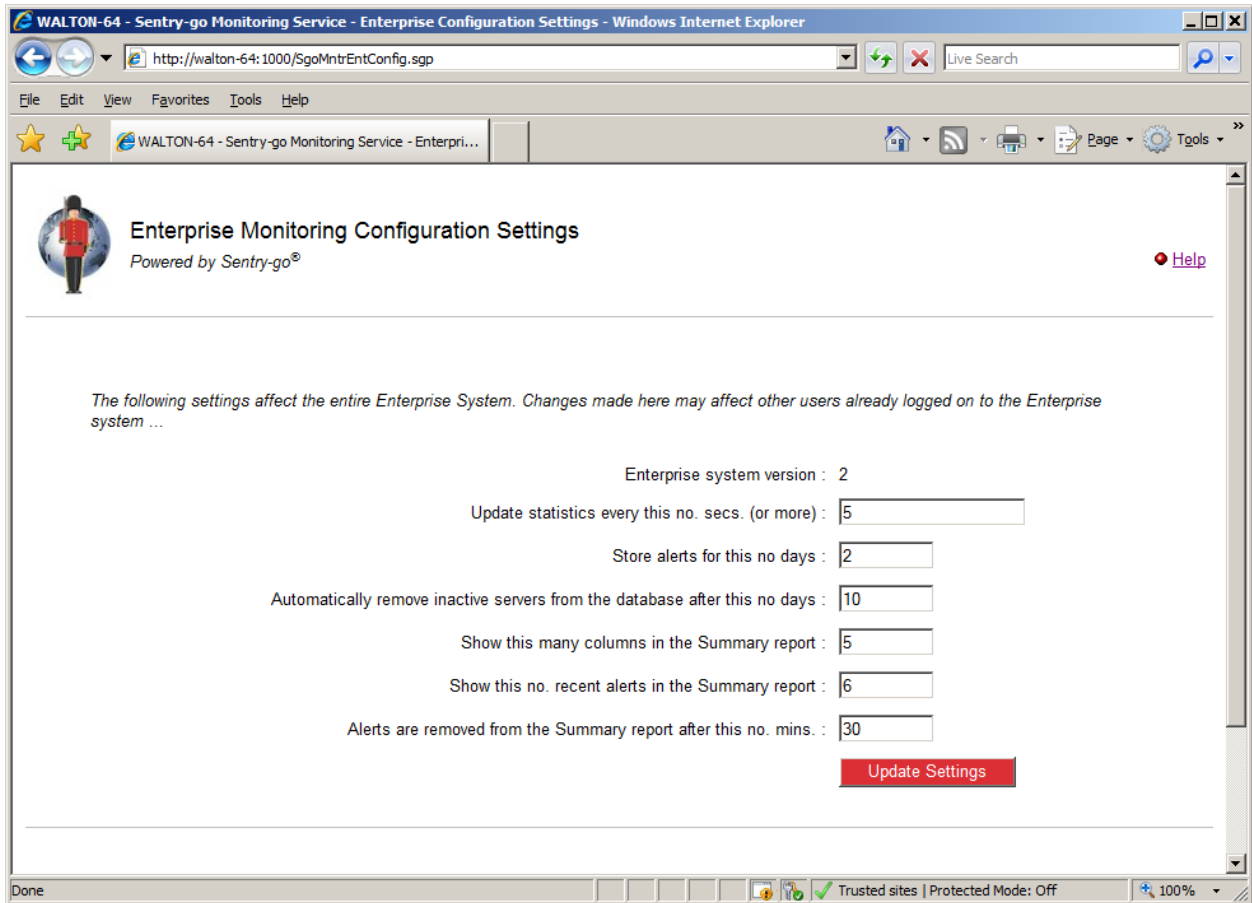
The screenshot shows the 'Sentry-go Configuration Settings' window. The title bar reads 'Sentry-go Configuration Settings'. Below the title bar is a navigation bar with tabs for HTML, FTP, E-mail, SQL, Locks, Scripts, E/Option (selected), Alerts, and Logging. The main content area is titled 'Sentry-go Monitoring Settings' with the subtitle 'Configure settings & options, quickly & easily ...'. Below this is a section for 'Sentry-go Enterprise Option' with a description and a 'Subscribe to the Enterprise Option ...' checkbox (checked). The 'Configure ...' button is circled in red. Other buttons include 'Show Me ...', 'New ...', 'ODBC Connections ...', 'Test ...', 'Access Reports ...', 'OK', 'Cancel', and 'Help'.

Assuming the subscription (connection) information is valid, click the “Configure” button. This will display the Enterprise settings in a web page; settings can also be edited from here.




As a global resource, settings changed here will affect all users/monitors connecting to the Enterprise database. Care should be taken when editing configured values.

The following settings are defined and can be edited within the Enterprise Option ...




Update statistics every this no. secs. (no more)

This value can be used to control how often a monitor's statistics are recorded. In particular it is used to restrict the number of updates in quick succession. The monitor will wait at least this no. seconds after statistics are updated before updating them again.

-  The lower the value, the more up to date statistics for a given history will be. However, this is at the expense of overall database performance.

Store alerts for this no days

This value determines how long alert information is stored in the EO database before it is automatically deleted by the housekeeping system.

-  The higher the value, the more history is available, but, depending on the number of alerts triggered, the larger the database will become.

Automatically remove inactive servers from the database after this no days

This value determines how long a Sentry-go monitor's details (statistics etc.) are retained in the database.

If the monitor does not interact with the EO database after this no. days, its details will automatically be removed by the housekeeping process.

Show this many columns in the Summary report

This value determines how many columns are shown in the Enterprise Option summary report. The default value is 5.


Show this no. recent alerts in the Summary report

This value determines how many alerts are shown in the Enterprise Option summary report when the "Show Recent Alerts" tick box is enabled. The default value is 6.

Alerts are removed from the Summary report after this no. mins

This value determines the alerts that are displayed in the Enterprise Option summary report when the "Show Recent Alerts" tick box is enabled.

The most recent alerts are shown. However, alerts are only listed if they occurred within the last X minutes (X being the figure defined here). The default value is 30 minutes.

 The Sentry-go Enterprise Option is self-maintaining. Settings such as these allow connecting monitors to perform housekeeping as and when required.

When complete, click 'Update Settings' to save these values to the database. Configuration settings are updated dynamically; there is no need to restart the database or server(s) to pick up any changes.

More Information, Help & Support

More information can be found in the guides that accompany the Sentry-go software. You can also access the following resources ...

- For the very latest information & product updates, please visit <http://www.Sentry-go.com>
- For sales advice, please e-mail Sales@Sentry-go.com
- For technical support, please e-mail Support@Sentry-go.com

