

Sentry-go[®]

Exchange Mailbox Summary Wizard Overview & Fact Sheet



Version 1.x

© 3Ds (UK) Limited
February, 2007

<http://www.Sentry-go.com>

Be Proactive, Not Reactive!

Background & Features

The Sentry-go Exchange Mailbox Summary Wizard is a utility that allows you to search, scan & report on mailboxes in your Microsoft Exchange server.

Information Scanned :	<ul style="list-style-type: none">• Local Exchange Server via MAPI profile• Remote Exchange Server via MAPI profile
Information Retrieved :	<ul style="list-style-type: none">• User to last access the mailbox• Last access date/time• Overall size of mailboxes• Message count & size of the Inbox, read & unread• Message count & size of the Outbox
Limiting Information :	<ul style="list-style-type: none">• Show mailboxes over a specified message count• Show mailboxes over a specified size (kb)• Show mailboxes with specific names, based on keywords - e.g. a specific Organisational Unit in Active Directory etc.
Manual Running :	✓
Scheduled Running :	✓
Results Output :	<ul style="list-style-type: none">• Delimited text (e.g. CSV) file for later export into a spreadsheet (e.g. Microsoft Excel) or other 3rd party reporting product• Written to an Web (HTM) file for loading into a web browser such as Microsoft's Internet Explorer.• E-mailed to one or more recipients.

Target Audience

The Sentry-go Exchange Mailbox Summary Wizard is aimed at organisations using Microsoft Exchange as their e-mail system and wish to periodically check & housekeep mailboxes on their server.

A command-line version of this utility – the Sentry-go E-mail Summariser is also available, though some features are only available in the Wizard.

System Requirements

The Sentry-go Exchange Mailbox Summary Wizard can be run on ...

- Windows NT v4.0
- Windows 2000
- Windows XP or above
- Windows Server 2003 or above

And running ...

- Microsoft Exchange v5.5, 2000, 2003 or above
- MAPI connection

No changes are made to the underlying e-mails contained in the mailbox.



Software Evaluations

You are welcome to download and evaluate any Sentry-go utility or Wizard for 21 days free of charge. Simply access <http://www.Sentry-go.com/software-downloads.htm> and select the product(s) you wish to evaluate.

Evaluations are time coded and may be limited to the number of items processed. However, in other ways they are identical to the main product.

Installing

The Wizard comes via Electronic Software Download (ESD) as a single ZIP file. Simply expand this file into a directory & run Wizard's executable application. When first run, the Wizard will configure itself & prompt you to enter your licence key details.

Running the Wizard

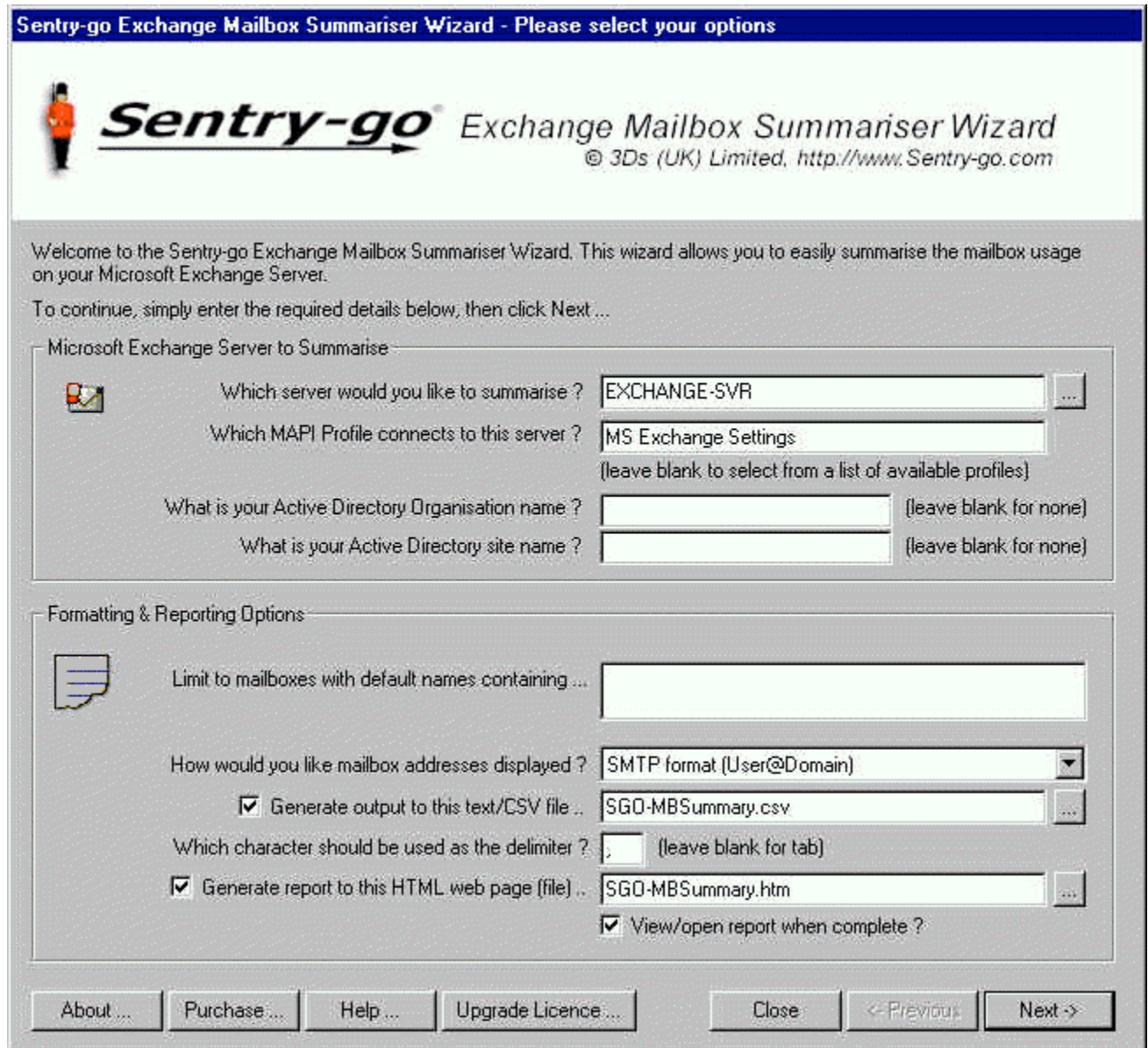
When run, the Wizard will run in one of the following modes ...

- If scheduling is enabled & the Wizard was asked to run the schedule each time it starts, it will run and wait for the appropriate time before triggering the scan. The Wizard's icon will appear in the Taskbar's System Tray.
- If the Wizard has not been run before, its icon will appear in the Taskbar's System Tray & the Options window described below will be shown.
- Otherwise, the Wizard's icon will appear in the Taskbar's System Tray. Click the icon with the left mouse button to display the Options window; or with the right button to display the Wizard's taskbar menu.



Specifying Options

The Wizard's primary options window allows you to define which Exchange server and mailbox settings you are going to scan as well as details you wish to retrieve and how you want them output. It is displayed when you click the Wizard's taskbar icon or the "Show Wizard" option from the menu ...



The screenshot shows the 'Sentry-go Exchange Mailbox Summariser Wizard - Please select your options' window. The title bar is blue with white text. Below the title bar is a header area with the Sentry-go logo (a person in an orange uniform) and the text 'Sentry-go Exchange Mailbox Summariser Wizard © 3Ds (UK) Limited, http://www.Sentry-go.com'. The main content area is light gray and contains a welcome message: 'Welcome to the Sentry-go Exchange Mailbox Summariser Wizard. This wizard allows you to easily summarise the mailbox usage on your Microsoft Exchange Server. To continue, simply enter the required details below, then click Next...'. There are two main sections: 'Microsoft Exchange Server to Summarise' and 'Formatting & Reporting Options'. The first section has four fields: 'Which server would you like to summarise?' (EXCHANGE-SVR), 'Which MAPI Profile connects to this server?' (MS Exchange Settings), 'What is your Active Directory Organisation name?' (blank), and 'What is your Active Directory site name?' (blank). The second section has five fields: 'Limit to mailboxes with default names containing ...' (blank), 'How would you like mailbox addresses displayed?' (SMTP format (User@Domain)), 'Generate output to this text/CSV file ..' (SGO-MBSummary.csv), 'Which character should be used as the delimiter?' (blank), and 'Generate report to this HTML web page (file) ..' (SGO-MBSummary.htm). There are also two checkboxes: 'Generate output to this text/CSV file ..' (checked) and 'View/open report when complete?' (checked). At the bottom, there are buttons for 'About ...', 'Purchase...', 'Help ...', 'Upgrade Licence...', 'Close', '<- Previous', and 'Next ->'.

From here you can specify the server you wish to connect to, any search criteria used to limit the mailboxes returned (e.g. to a specific OU) and the way you want the information presented/formatted.

Specifying Thresholds, Scheduling & E-mail Options

The next window allows you to define a number of optional components. For example you can determine the level of detail the report will show, limit the results to mailboxes of a given size or message count, schedule the scan to run automatically & enable scanned information to be e-mailed to one or more recipients ...

The screenshot shows the 'Optional settings' window of the Sentry-go Exchange Mailbox Summariser Wizard. The window title is 'Sentry-go Exchange Mailbox Summariser Wizard - Optional settings'. The Sentry-go logo is on the left, and the text 'Exchange Mailbox Summariser Wizard © 3Ds (UK) Limited, http://www.Sentry-go.com' is on the right. Below the title bar, there is a paragraph explaining that the following options are optional and allow for restricting mailboxes shown, scheduling the check, and sending results by e-mail.

Limit Results:

- Show/check overall mailbox totals & message counts?
- Show/check totals & message counts for each queue in mailbox? (resets last logged-on user)
- Report on mailbox if message count exceeds this no. messages: (0 disables check)
- Report on mailbox if size exceeds this no. Kb: (0 disables check)

Scheduling:

You can schedule the wizard to run automatically at regular intervals or at a certain time each day/week etc. To do this, set the options below.

The Wizard must be running in order for the scheduled check to be run.

Run the Wizard ...

Every: minute(s)
At:

Always run schedule when Wizard is started

E-mail Notification:

In addition to reporting, summary details can also be e-mailed to one or more users. To do this, enter the details below.

Use this SMTP Server:
using port:
Send mail from:

Notify these users (separate with commas) ...

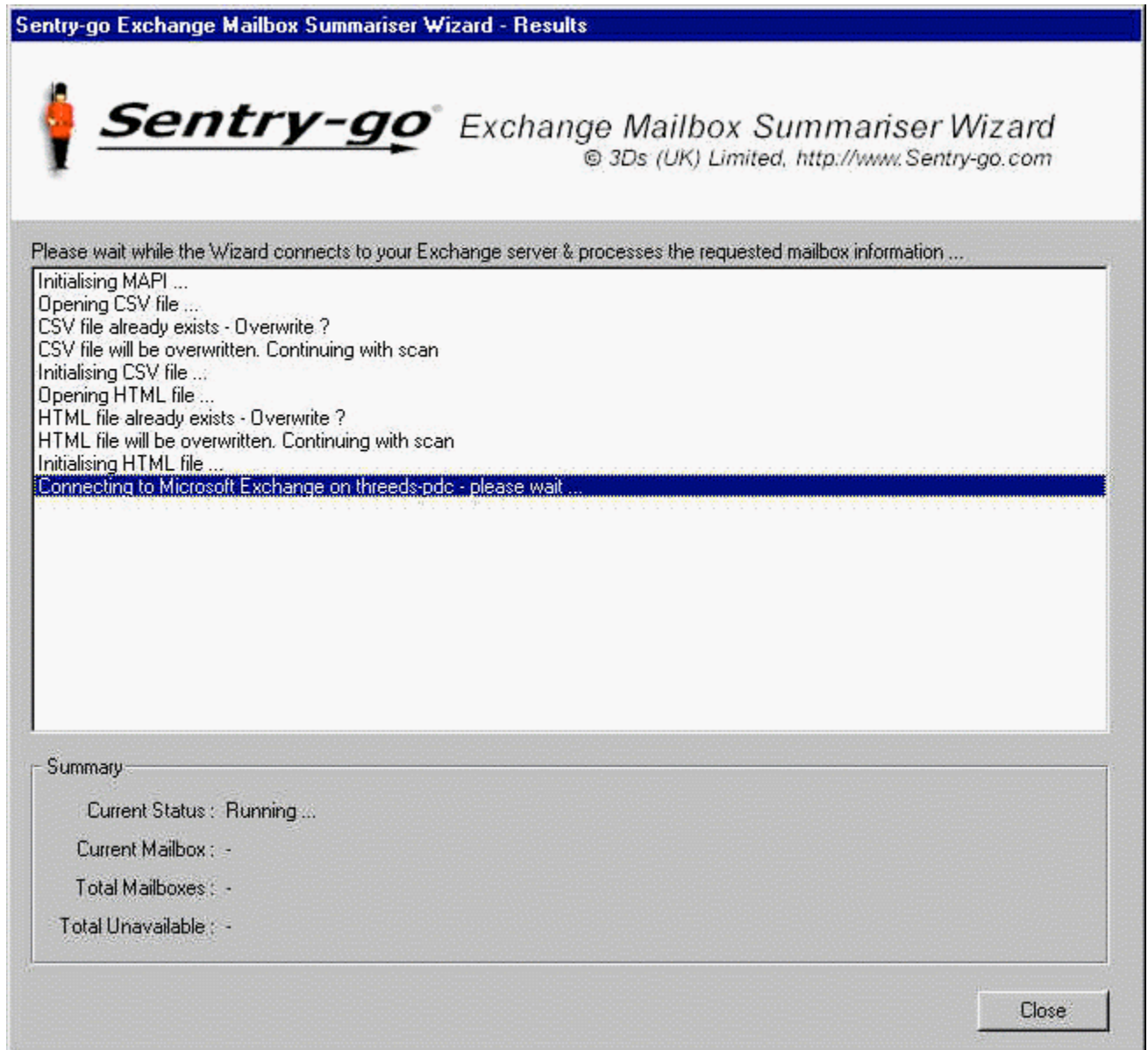
Buttons at the bottom: About ..., Purchase ..., Help ..., Upgrade Licence ..., Close, <- Previous, Next ->

These options allow you to ...

- Limit results further – e.g. the information captured, only mailboxes over a given size or message count etc.
- Schedule the Wizard to run regularly at a given time
- Specify one or more e-mail addresses that should receive an report on the output generated after each run.

Summary Results

Having configured your options – which will be stored for use next time automatically, you are ready to run the Wizard. Each time a scan, either scheduled or manual is run, progress & results are displayed in the following window. When a scheduled scan is run, the window is minimised but can be shown by clicking it from the taskbar ...



Web Report

If requested, a web report can be produced automatically by the Wizard, without the need for additional web server software. This report summarises the information captured from the mailboxes scanned ...

Sentry-go Exchange Mailbox Summary
for Org.: N/A, Site: N/A, Server: SERVER-pdc
Generated on 15th Sept. 2006 at 16:11:07

Version 1.0, Licenced to BETA Trial for COMPANY (UK) Limited

	Display Name	Last Accessed By	Last Accessed On	Mailbox Count		
				Total Message Size (bytes)	Total Message Count	Inbox Message Size (bytes)
ATION/OU=FIRST ADMINISTRATIVE TION/CN=CONNECTIONS/CN=SMTP 59EF0-45A6-4C0A-9642-	SMTP (SERVER-PDC- {FE559EF0-45A6-4C0A- 9642-DBA7E11FB4FD})	COMPANY\JimJ	14/09/2006 22:37	0	0	N/A
ATION/OU=FIRST ADMINISTRATIVE S/CN=JIMJ	JIM G. Johnson	COMPANY\JimJ	15/09/2006 16:06	25590	30	17668
ATION/OU=FIRST ADMINISTRATIVE S/CN=JANE	Jane J. Williams	COMPANY\JimJ	14/09/2006 22:37	0	0	0
ATION/OU=FIRST ADMINISTRATIVE TION/CN=SERVERS/CN=SERVER- SYSTEM ATTENDANT	System Attendant	NT AUTHORITY\SYSTEM	15/09/2006 06:06	0	0	0
ATION/OU=FIRST ADMINISTRATIVE S/CN=SYSTEMMAILBOX{FE559EF0- 45A6-4C0A-9642-DBA7E11FB4FD}	SystemMailbox	COMPANY\JimJ	14/09/2006 22:37	250007	404	0

Purchasing

Sentry-go Wizards & Utilities can be purchased on-line at <http://www.Sentry-go.com/buy-now.htm> using a credit or debit card. You can also receive an on-line quote or find instructions on using a Purchase Order from this web site.

Custom Monitoring, Utilities & Wizards

In addition to this and other Wizards, utilities & monitors, we offer bespoke software development, allowing you to tailor the solution to meet your specific needs - at a cost much cheaper than you might expect!

To request a quotation or find out more, simply contact us at the address below, or visit the Sentry-go web site at <http://www.Sentry-go.com/build-a-custom-monitor.htm> and tell us more about your requirement.

About 3Ds (UK) Limited

Established in 1998, 3Ds (UK) Limited is a software house & consultancy specialising in easy to use, affordable monitoring solutions for both Windows Desktops & Servers through our Sentry-go® technology.

As software consultants, we also specialise in the latest client/server, n-tier, web-based & .NET technologies. We work either independently or alongside your own developers, offering a number of key services vital to the successful **D**esign, **D**evelopment & **D**elivery of **S**olutions. We have many years of experience in implementing robust, flexible and efficient solutions into new environments as well as integrating the same solutions with client's existing & legacy systems.

Why Choose 3Ds ?

3Ds is proud to be an independent consulting & software house based to the south of London in the United Kingdom. We believe that this allows us not only to respond quickly and effectively to our customer's specific needs but also guarantees that you can reach the right person with the right skills at the right time. We won't pass you from team to team & person to person in order to get an answer!

Our Sentry-go monitoring solutions are used by companies world-wide. In addition to these, we also offer other a number of others services ...

Within the UK

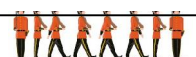
- Software development using the latest Windows, .NET & web-based technologies.
- Consulting services for development, project, or support-related issues.
- Additional product training.
- Customised training - for Sentry-go software, O/S, Technical Support, programming & technologies etc.

World-wide

- Software customisations & enhancements, in order to integrate Sentry-go with your existing & in-house systems.
- Custom monitor development.

3Ds (UK) Limited is an
itSMF member.

itSMF
The IT Service Management Forum





3Ds (UK) Limited
Design, Develop, Deliver Solutions!

69, Esher Road,
East Molesey,
Surrey.
KT8 0AQ
<http://www.3Ds.co.uk>