



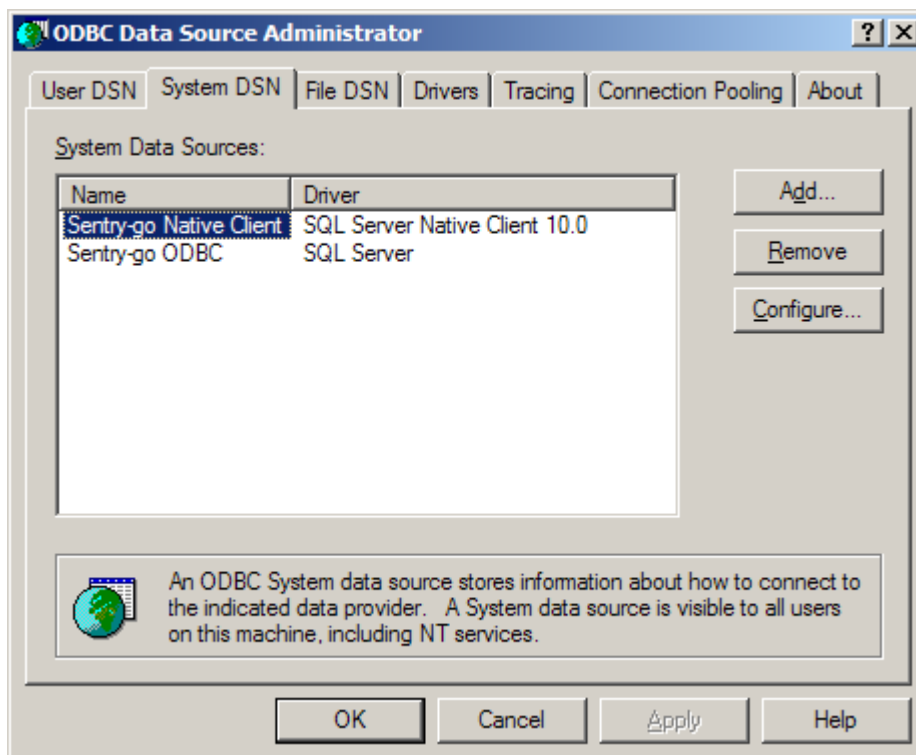
# Using the ODBC Data Source Administrator

Last Updated Thursday, 19 April 2012

© 3Ds (UK) Limited  
<http://www.Sentry-go.com>

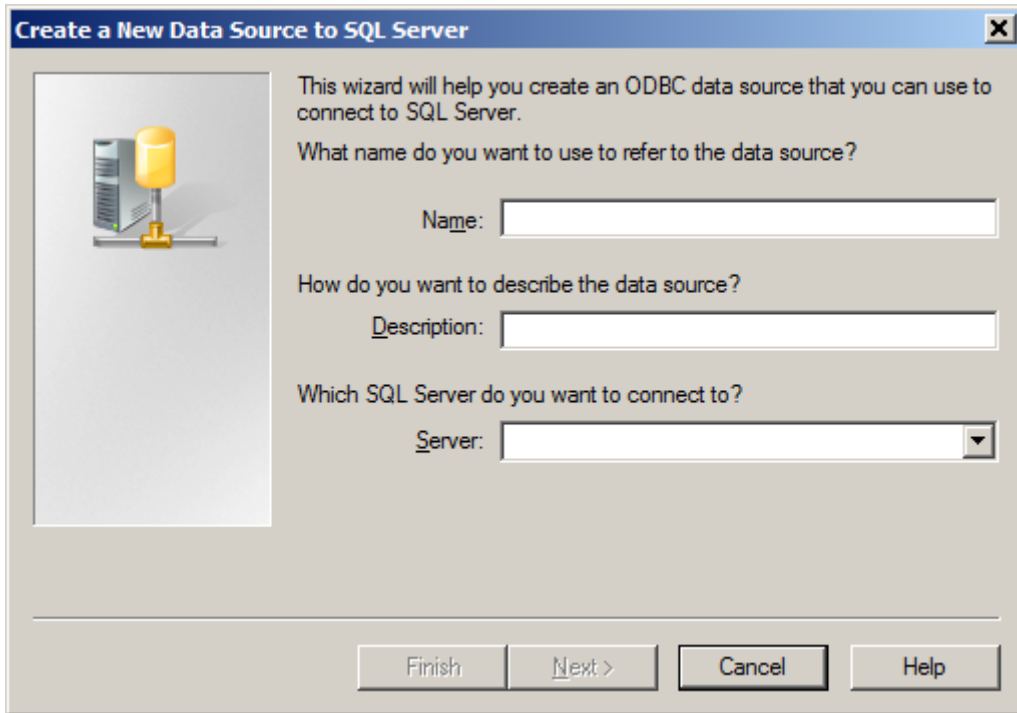
*Be Proactive, Not Reactive!*

On a Windows PC or server, the ODBC Data Source Administrator is used to configure & maintain ODBC connections. It is accessed from Windows Administrative Tools or by running ODBCAD32.EXE.



- When creating a data source for use with Sentry-go, always create a System DSN. This will allow the monitoring service to access the configured information.
- To create a new connection, select the "System DSN" tab, then click "Add".
- Select the appropriate driver (e.g. SQL Server) and click "Finish".

- The driver's connection wizard will be displayed. This will look something like this ...



- The Wizard will guide you through the creation process.
- Once complete, the new ODBC connection will be added to the list. This connection can then be accessed & used by Sentry-go.

### More Information

If you need more help or information on this topic, please contact our [Support Team](#) for further assistance.

