



# How to Configure a Sentry-go Monitor

Last Updated Thursday, 19 April 2012

© 3Ds (UK) Limited  
<http://www.Sentry-go.com>

*Be Proactive, Not Reactive!*

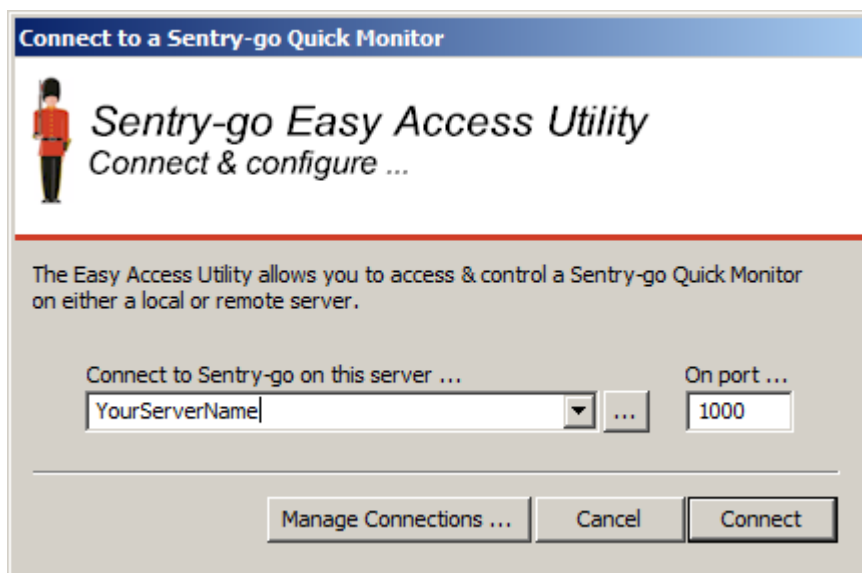
---

Although some checks are performed remotely, Sentry-go monitors themselves typically run locally on the server being monitored. You can, however, configure them both locally on the server, or remotely from another server or your desktop, using the client tools provided.

## The Sentry-go Easy Access Utility


To configure Sentry-go you can use the Easy Access Utility ...

- Install Sentry-go Client Tools on your server or desktop.
- Launch the Easy Access Utility, from the Programs/Sentry-go menu, or the desktop shortcut.
- When prompted, select or enter the server you wish to configure & click Connect ...



- The main window will now be displayed. From here all primary features of the monitor & configuration can be accessed.

**Sentry-go Quick Monitor Easy Access Utility**



## Sentry-go Quick Monitor Easy Access Utility






*Monitoring made quick & easy!*

---


Connected to Server : walton-64, server up time: 0 day(s), 3 hour(s), 39 mins(s), 2 sec(s)  
 Sentry-go Version : 6, Windows 2008 or Vista (2, 6.0), configured: 30th July 2011 at 20:45:34  
 Current monitor status : Running, monitoring enabled (Current health: 45%) ...

---

The Easy Access Utility allows you to access & control a Sentry-go Quick Monitor on a local or remote server ...

|   |  |   |
|---|--|---|
|    | Connect to another local or remote Quick Monitor ...   | <input type="button" value="Connect ..."/>            |
|    | Start or stop the connected Sentry-go Quick Monitor service ...  | <input type="button" value="Monitoring Service ..."/> |
|    | Access web reports from the connected Quick Monitor ...  | <input type="button" value="Web Reporting ..."/>      |
|    | Configure the Quick Monitor's settings ...   | <input type="button" value="Configure ..."/>          |
|   | Copy settings from one monitor to another (import/export) ...  | <input type="button" value="Import/Export ..."/>      |
|  | Access the Client Console to show real-time alerts & activity, synch. settings across servers, access Enterprise features etc. ... | <input type="button" value="Client Console ..."/>     |

---

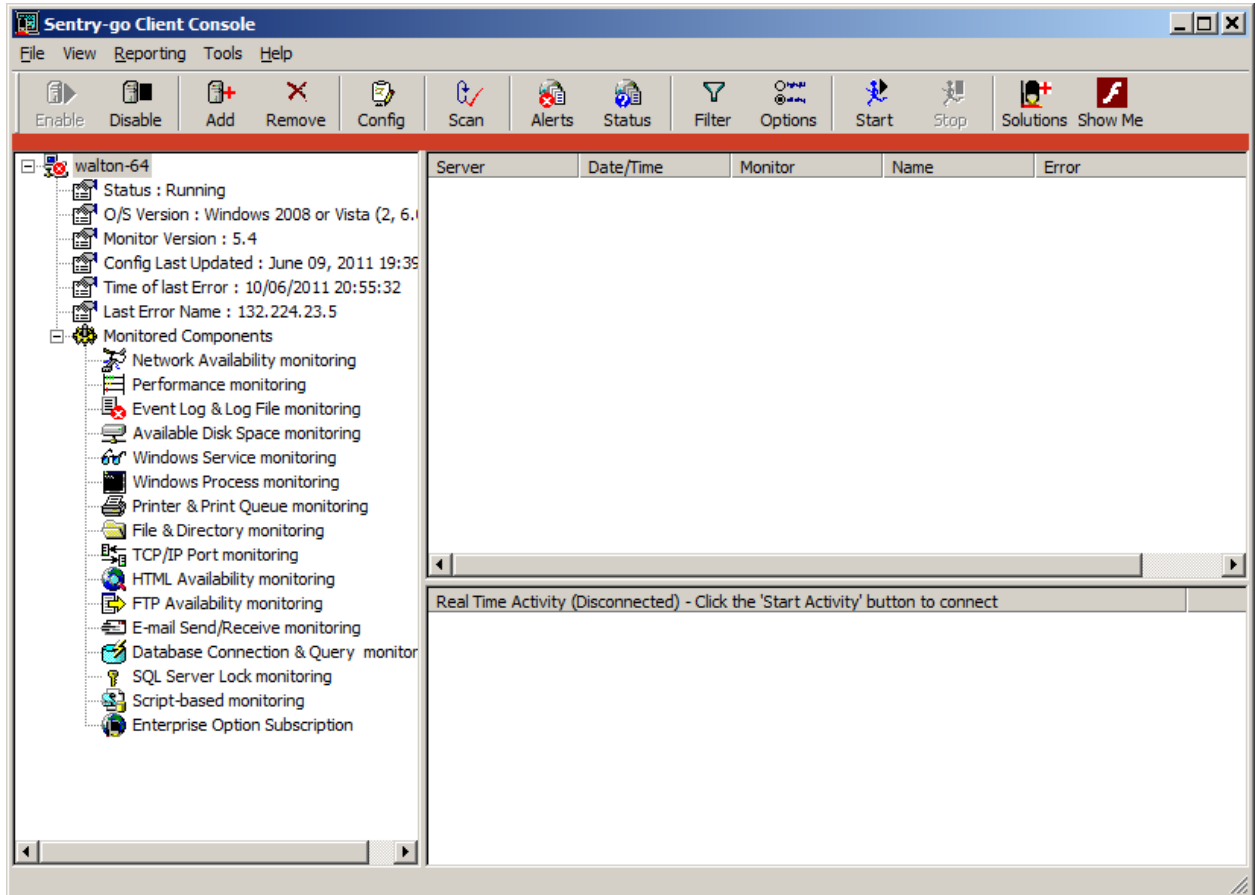
 Connected ...

- To configure the monitor, click the “Configure” button.
- To export settings to a file, or import previously saved settings from a file, click the “Import/Export” button.
- For more advanced options, click the “Advanced” button to access the Client Console. See below.
- [Click here for more information on the Easy Access Utility.](#)

## The Sentry-go Client Console

To configure Sentry-go you can also use the more advanced, Client Console. From here you have access to both the primary & advanced real-time & alerting features of Sentry-go ...

- Install Sentry-go Client Tools on your server or desktop.
- Launch the Client Console, from the Programs/Sentry-go menu, or the desktop shortcut.



- If required, register the monitor with the Console by selecting the “Add” button from the button bar. Typically this will only need to be performed once per monitor, per Console. The monitor will be added to the server list on the left hand side.
- To configure the monitor, highlight it in the left hand list and click “Config.” button from the button bar.
- To synchronize (copy) settings between registered monitors, highlight the source monitor in the left hand list, right-click to display the menu and click “Copy/Synchronize Sentry-go settings between monitors”.
- [Click here for more information on the Sentry-go Client Console.](#)

## More Information

If you need more help or information ...

- Contact our [Support Team](#).
- Watch [demonstrations & walkthrough videos on-line](#).
- Visit <http://www.Sentry-go.com>.

